



STAINLESS STEEL

150 LBS SCREWED FITTINGS

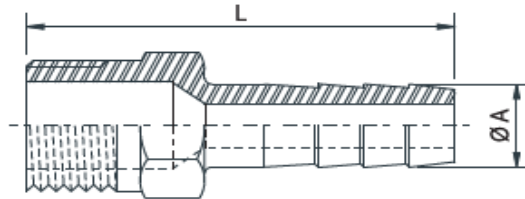
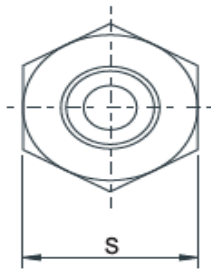
BSPP (ISO 228-1), BSPT (ISO 7-1), NPT THREAD

DIMENSION CONFORM TO ASME B16.3 AND ANSI/MSS SP-114-2018 WHERE APPLICABLE

MATERIAL CONFORM TO ASTM A351 GR. CF8 & CF8M

PRESSURE-TEMPERATURE RATINGS 300 PSI (-29 TO 66°C)

MADE BY LOST WAX INVESTMENT CASTING



HEX HOSE NIPPLE

SIZE	ØA	L	S	Weight
	(mm)	(mm)	(mm)	(Kg/Pc)
1/8"	7.0	33.7	12.4	0.014
1/8"	10.0	35.0	14.0	0.014
1/4"	8.0	42.9	15.0	0.022
1/4"	13.5	40.0	15.0	0.027
3/8"	10.0	48.3	19.0	0.036
3/8"	17.0	44.5	17.0	0.044
1/2"	13.0	56.0	22.8	0.059
1/2"	15.0	56.0	22.8	0.055
1/2"	21.0	56.0	22.8	0.082
3/4"	20.0	59.0	28.0	0.090
3/4"	27.0	59.0	28.0	0.120
1"	25.0	68.0	36.0	0.160
1"	33.0	68.0	36.0	0.221
1 1/4"	32.0	75.0	45.0	0.231
1 1/4"	42.0	75.0	45.0	0.331
1 1/2"	40.0	79.5	50.0	0.305
1 1/2"	48.0	79.5	50.0	0.427
2"	51.5	86.5	60.0	0.448
2"	60.0	86.5	60.0	0.482
2 1/2"	65.0	107.3	78.5	0.834
2 1/2"	65.0	119.5	80.0	1.185
3"	77.0	111.0	92.0	1.061
3"	80.0	111.0	92.0	1.279
3"	90.0	131.0	92.0	1.370
4"	100.0	114.0	117.6	1.446
4"	115.0	136.0	120.0	2.420